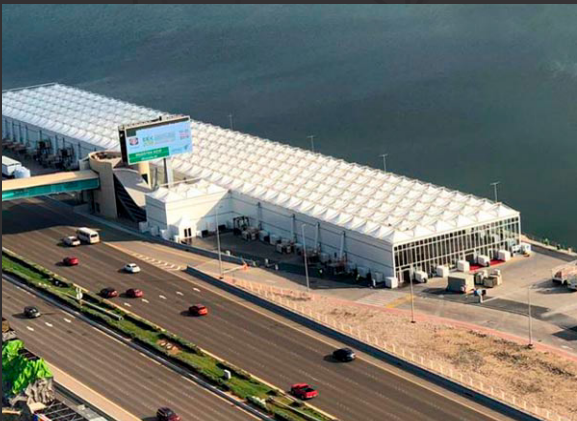


TECHNICAL SPECIFICATIONS



Structure

- Aluminum: ALF 6082 T6 alloy
- Steel parts: S275



Roof Cover

- Fire-retardant PVC fabric, Class B1 (DIN 4102), 950 gsm



Side Cover

- 27/50 mm thick sandwich panel walls, fire-retardant Class B2 (DIN 4102)
- 6 mm thick single-glazed tempered glass
- Fire-retardant PVC fabric, Class B1 (DIN 4102), 950 gsm



Flooring

ALF Cassette Flooring system having load capacity from 350Kg/sqm upto 1200Kg/sqm comprising of Aluminum cassette frame ALF 6082 T6 covered with 18mm Plywood deck



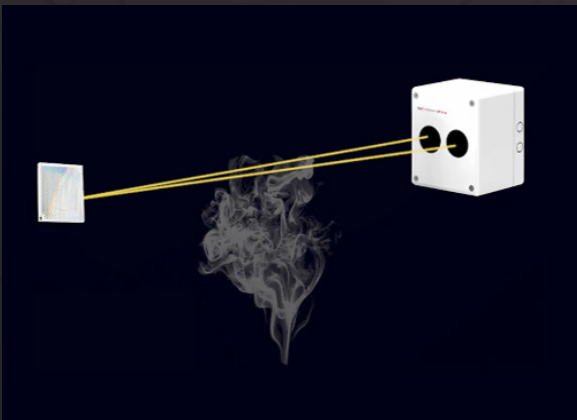
Doors

- Aluminum-framed glass swing double doors, 2 × 2.2 m
- Aluminum-framed glass/hard panel push-bar single doors, 1 × 2.2 m



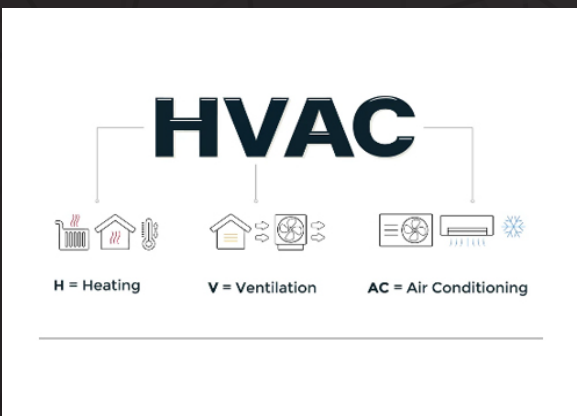
Electrical

- Lighting: Hay Bay LED Lights
 - Chandeliers
 - Spot Lights
- Distribution Boards (DBs) as per layout and load capacity



Fire Alarm

- Smoke Detectors battery operated



HVAC

- Ducted system with air handling units and chillers (For Exhibition and large span structures)
- Package unit system (10,12 &25tons)
- Indoor floor-standing units (4,5tons)